



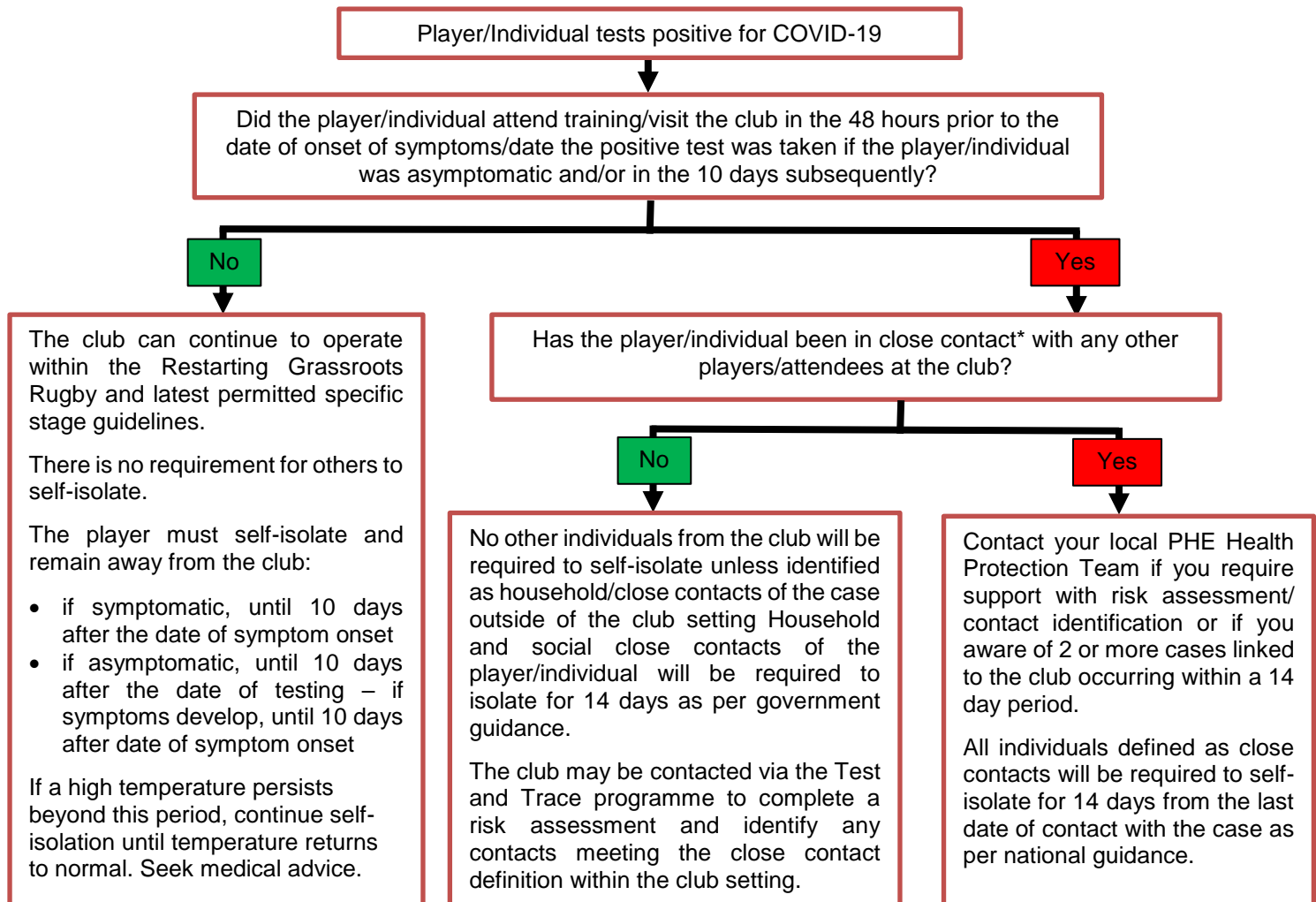
GUIDANCE FOR CLUBS FOLLOWING A

POSITIVE COVID-19 TEST

SEPTEMBER 2020

The following provides an overview of the action required following a positive COVID-19 test in a club.

Further information is available in the 'Extended Guidance for Clubs Following a Positive COVID-19 Test'



Please visit the page for [RFU Coronavirus Hub](#) to:

- find the [Extended Guidance for Clubs Following a Positive COVID-19 Test](#) document
- report this case to the RFU via the [online Coronavirus reporting form](#)
- find guidance for clubs/players on [returning to activity after having COVID-19](#)

* Close contact for players during rugby activity (playing and training) is defined by the Team Sport Risk Exposure Framework.
Close contact for players and all other individuals at all other times is defined by the government guidelines.